



TIIG

INJURY SURVEILLANCE IN THE NORTH WEST OF ENGLAND

Injury attendances to Rochdale Infirmary Urgent Care Centre

October 2012 to September 2013

This report summarises recorded injury attendances to Rochdale Infirmary Urgent Care Centre (UCC) between October 2012 and September 2013.

Between October 2012 and September 2013, there were 22,203 injury attendances to Rochdale Infirmary UCC. Males accounted for over half (53%) of all attendances (**Figure 1**). The month with the highest attendances was July (n=2,129) with January (n=1,683) having the lowest attendances. The majority (70%) of attendances were recorded as other injury; of the specified injury groups falls accounted for the highest proportion (16%) followed by road traffic collision (RTC) (5%) and bites and stings, assaults and burns and scalds (all 3%) (**Table 1**).

The highest proportion of attendances was for persons aged 5 to 19 (28%) and 20 to 34 (23%) years (**Figure 2**). Over a quarter (27%) fall attendees were aged 65 or over. Close to two-fifths (39%) of RTC attendees were aged 20 to 34 years (**Figure 3**).

Table 2 shows the location where injuries occurred. Half (50%) of injuries occurred in the home; 13% of injuries occurred in a public place. More than two-fifths (42%) of falls occurred in the home whilst over three-quarters (76%) of deliberate self harm (DSH) injuries occurred in the home.

Table 3 shows the ethnicity of attendees to Rochdale Infirmary ED. Over seven in ten (73%) were white and 19% were Pakistani.

The disposal of a patient can give an indication of the severity of the injuries sustained. Two thirds (66%) of attendees were discharged, whilst almost a third (31%) were referred and 2% were admitted (**Table 4**). Almost three quarters (74%) of RTC attendees were discharged (**Table 5**).

Table 6 shows the arrival methods of attendances at Rochdale Infirmary UCC. Almost three-quarters (74%) arrived by private transport whilst 10% arrived by taxi, 6% on foot and 4% by ambulance.

Table 7 presents data on assault attendances at Rochdale Infirmary UCC. There were 657 assault attendances recorded between October 2012 and September 2013. Almost seven in ten (68%) were male whilst almost four in ten (38%) were aged 20 to 34 years. Over four in ten (44%) occurred in a public place.

Figure 1: Rochdale Infirmary UCC: Total injury attendances by gender and month, October 2012 to September 2013

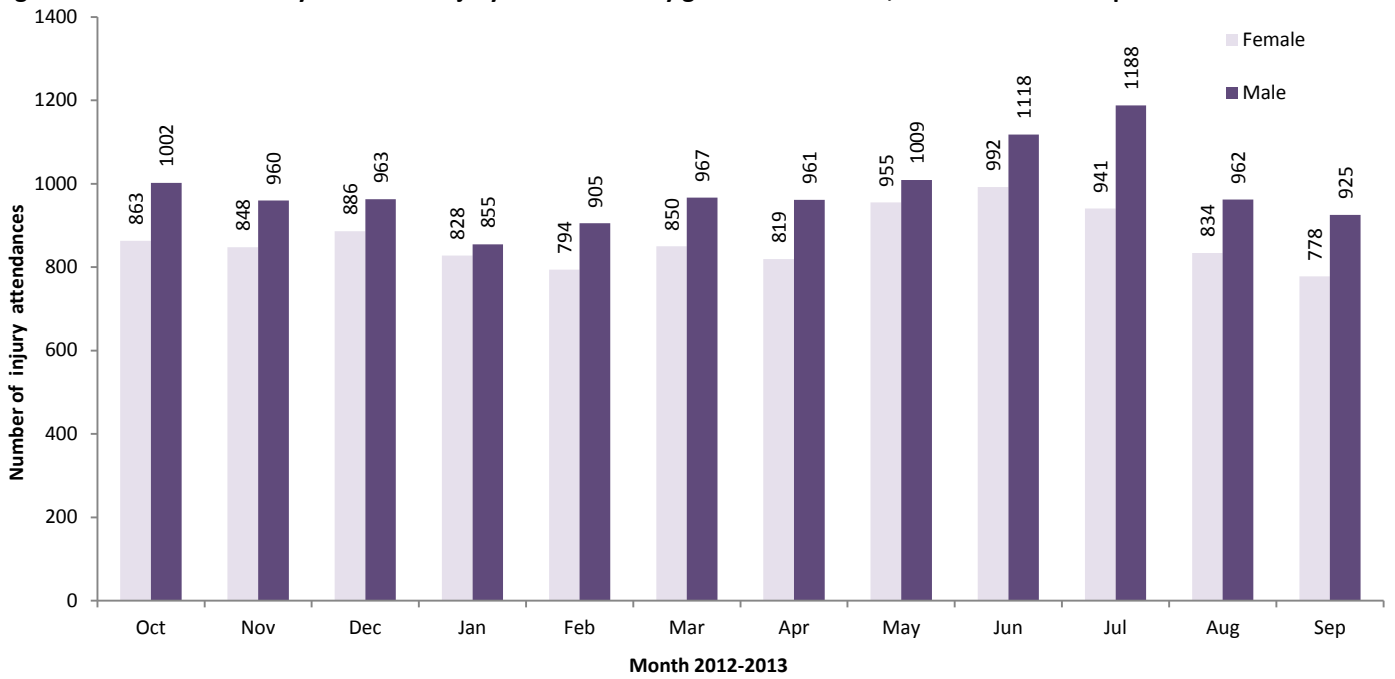
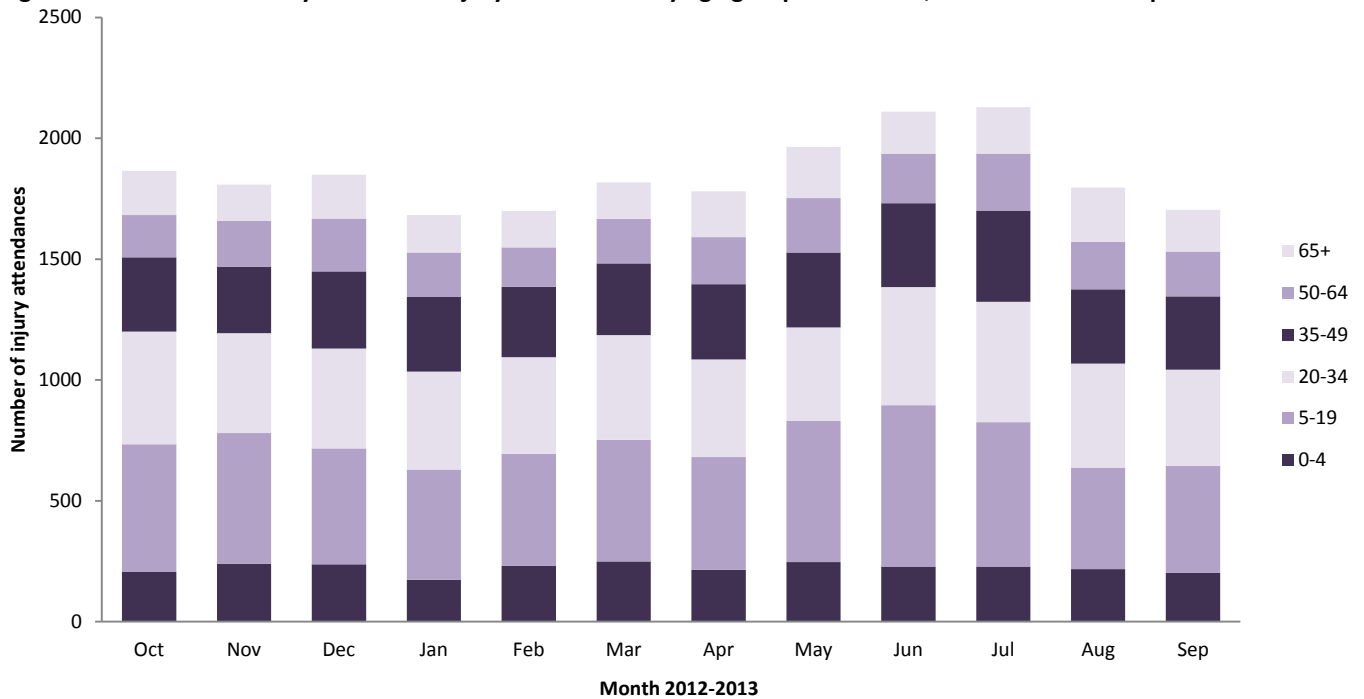


Table 1: Rochdale Infirmary UCC: Total injury attendances by injury group and month, October 2012 to September 2013¹

Injury group	Oct	Nov	Dec	Jan	Feb	Mar	Apr	May	Jun	Jul	Aug	Sep	Total	%
Other injury	1322	1350	1281	1121	1222	1300	1306	1375	1469	1465	1205	1159	15575	70
Fall	273	214	350	331	238	280	266	361	322	324	304	280	3543	16
RTC	103	100	90	83	114	98	66	83	117	91	84	78	1107	5
Bites and stings	45	27	30	34	29	39	47	56	59	131	93	76	666	3
Assault	60	52	58	57	41	57	49	40	67	61	56	59	657	3
Burns and scalds	56	60	32	47	48	37	<45	<45	64	44	45	40	560	3
DSH	6	5	8	10	7	6	***	<6	12	13	9	11	95	0
Total	1865	1808	1849	1683	1699	1817	1780	1964	2110	2129	1796	1703	22203	100

Figure 2: Rochdale Infirmary UCC: Total injury attendances by age group and month, October 2012 to September 2013



¹ Please note that all numbers less than five have been suppressed in line with patient confidentiality and if there is only one number <5 in a category then two numbers will be suppressed at the next level.

Figure 3: Rochdale Infirmary UCC: Total injury attendances by age group and injury group (excluding other injury), October 2012 to September 2013

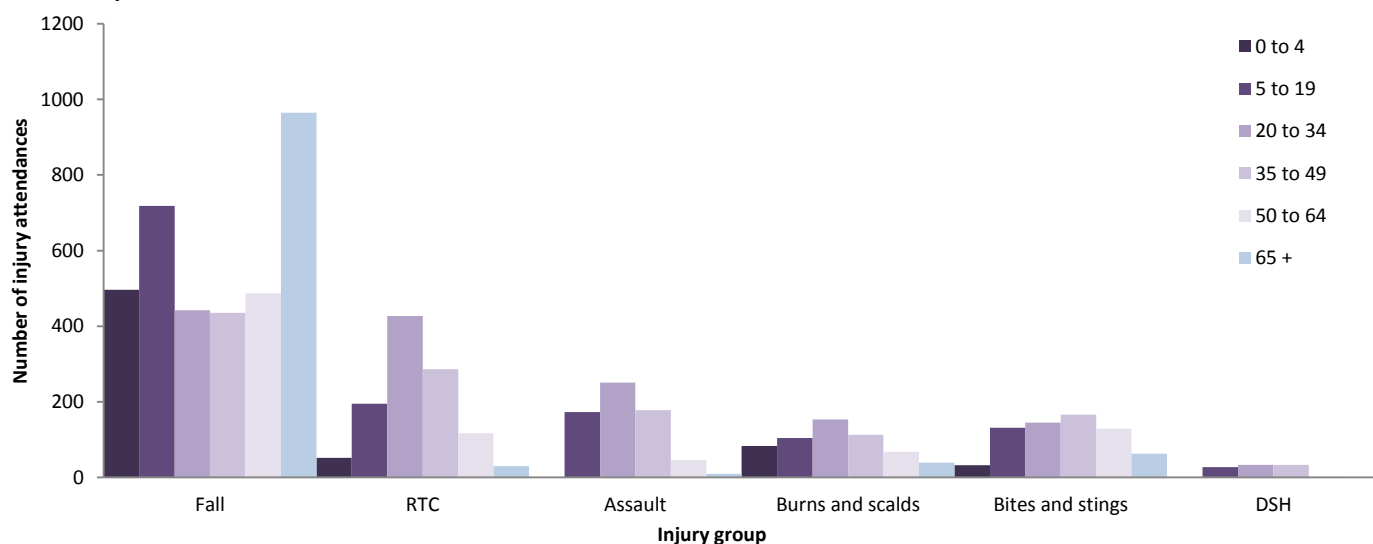


Table 2: Rochdale Infirmary UCC: Total injury attendances by location of incident and injury group, October 2012 to September 2013¹

Incident location	Assault		Bites and stings		Burns and scalds		DSH		Fall		RTC		Other		Total	
	n	%	n	%	n	%	n	%	n	%	n	%	n	%	n	%
Home	126	19	288	43	321	57	72	76	1501	42	24	2	8867	57	11199	50
Other	127	19	171	26	57	10	9	9	458	13	1048	95	2754	18	4624	21
Public place	291	44	136	20	<20	3	***	4	953	27	17	2	1416	9	2833	13
Not recorded	47	7	19	3	90	16	6	6	243	7	11	1	578	4	994	4
Work	34	5	46	7	70	13	0	0	112	3	7	1	982	6	1251	6
Educational establishment	32	5	6	1	<10	1	***	4	276	8	0	0	978	6	1302	6
Total	657	100	666	100	560	100	95	100	3543	100	1107	100	15575	100	22203	100

Table 3: Rochdale Infirmary UCC: Total injury attendances by ethnicity and month, October 2012 to September 2013^{1,2}

Ethnicity	Oct	Nov	Dec	Jan	Feb	Mar	Apr	May	Jun	Jul	Aug	Sep	Total	%
White	1337	1268	1271	1231	1217	1345	1319	1434	1529	1574	1316	1260	16101	73
Pakistani	356	365	419	299	323	322	321	365	405	383	350	312	4220	19
Bangladeshi	48	56	56	41	50	40	33	37	49	47	32	36	525	2
Not recorded	38	37	29	34	32	33	37	46	34	45	30	28	423	2
Black	29	30	22	15	18	18	13	23	20	20	24	23	255	1
Mixed	19	21	20	23	21	16	13	23	34	23	18	18	249	1
Any other ethnic group	16	12	15	15	16	16	26	19	21	19	15	10	200	1
Any other Asian background	<10	12	10	16	11	<10	12	13	11	8	5	8	124	1
Indian	10	***	7	<10	<10	14	6	***	<6	<10	<6	<10	85	0
Chinese	***	***	0	***	***	***	0	***	***	***	***	***	21	0
Total	1865	1808	1849	1683	1699	1817	1780	1964	2110	2129	1796	1703	22203	100

Table 4: Rochdale Infirmary UCC: Total injury attendances by method of disposal and month, October 2012 to September 2013^{1,3}

Disposal	Oct	Nov	Dec	Jan	Feb	Mar	Apr	May	Jun	Jul	Aug	Sep	Total	%
Discharged	1203	1173	1206	1047	1174	1227	1131	1305	1346	1367	1270	1224	14673	66
Referral/follow-up	610	581	594	603	483	530	598	614	709	707	464	436	6929	31
Admitted	44	46	38	<35	<40	43	43	35	44	43	55	34	491	2
Other	8	8	11	***	<10	17	8	10	11	12	7	9	110	0
Total	1865	1808	1849	1683	1699	1817	1780	1964	2110	2129	1796	1703	22203	100

¹ Please note that all numbers less than five have been suppressed in line with patient confidentiality and if there is only one number <5 in a category then two numbers will be suppressed at the next level.

² White = Irish, British, other white background; Mixed = white and black, white and Asian, mixed any other; Black = African, Caribbean, other black.

³ Admitted=admitted to UCC bed/became a lodged patient of the same health care provider; Discharged=discharged - did not require any follow up treatment; Referral/follow-up =discharged - follow up treatment to be provided by GP, referred to UCC clinic, referred to fracture clinic, referred to other out-patient clinic, referred to other health care professional; Other=died in department, left department before being treated, left department having refused treatment, other.

Table 5: Rochdale Infirmary UCC: Total injury attendances by method of disposal and injury group, October 2012 to September 2013⁴

Disposal	Assault		Bites and stings		Burns and scalds		DSH		Fall		Other injury		RTC		Total	
	n	%	n	%	n	%	n	%	n	%	n	%	n	%	n	%
Discharged	432	66	493	74	201	36	40	42	2127	60	10557	68	823	74	14673	66
Referral/follow-up	174	26	165	25	338	60	29	31	1182	33	4764	31	277	25	6929	31
Admitted	17	3	<10	1	16	3	20	21	200	6	228	1	***	0	491	2
Other	34	5	***	0	5	1	6	6	34	1	26	0	***	0	110	0
Total	657	100	666	100	560	100	95	100	3543	100	15575	100	1107	100	22203	100

Table 6: Rochdale Infirmary UCC: Total injury attendances by mode of arrival and month, October 2012 to September 2013⁴

Arrival mode	Oct	Nov	Dec	Jan	Feb	Mar	Apr	May	Jun	Jul	Aug	Sep	Total	%
Private transport	1378	1323	1405	1180	1259	1387	1314	1493	1569	1602	1360	1227	16497	74
Taxi	173	188	177	197	163	176	182	183	189	192	163	171	2154	10
Foot	106	114	91	109	106	99	125	91	140	130	104	139	1354	6
Ambulance	71	53	70	74	85	50	47	92	64	72	72	80	830	4
Other	97	75	70	71	58	51	66	58	87	72	55	37	797	4
Public transport	31	41	22	28	21	30	29	32	42	35	19	29	359	2
Work transport	<10	14	8	<25	***	12	<15	15	<20	19	16	<20	165	1
Police	***	0	6	***	***	12	***	0	***	7	7	***	47	0
Total	1865	1808	1849	1683	1699	1817	1780	1964	2110	2129	1796	1703	22203	100

Table 7: Rochdale Infirmary UCC: Assault attendances by gender, incident location and age group of attendance, October 2012 to September 2013

	Assaults (n=657)		All injuries (n=22,203)
	n	%	%
Gender			
Female	213	32	47
Male	444	68	53
Location			
Home	126	19	50
Other	127	19	21
Public place	291	44	13
Not recorded	47	7	4
Work	34	5	6
Educational establishment	32	5	6
Age group			
0 - 4	0	0	12
5 - 19	173	26	28
20 - 34	251	38	23
35 - 49	178	27	17
50 - 64	46	7	11
65 plus	9	1	10

Published November 2013
 Jennifer Brizell (TIIG researcher)
 Centre for Public Health, Faculty of Education, Health and Community, Liverpool John Moores University
 2nd Floor, Henry Cotton Campus, 15-21 Webster Street, Liverpool, L3 2ET
 Tel: 0151 231 4500 Email: j.s.brizell@ljmu.ac.uk
 Website: www.tiig.info (please note all data requests should be made through the TIIG website)
 Twitter: @TIIG_CPH

⁴ Please note that all numbers less than five have been suppressed in line with patient confidentiality and if there is only one number <5 in a category then two numbers will be suppressed at the next level.